



# **Incident Command System (ICS) in an Animal Disease Emergency**

**INCIDENT COMMAND SYSTEM WORKSHOP**  
**MARCH 5, 2013**  
**Guelph, ON**

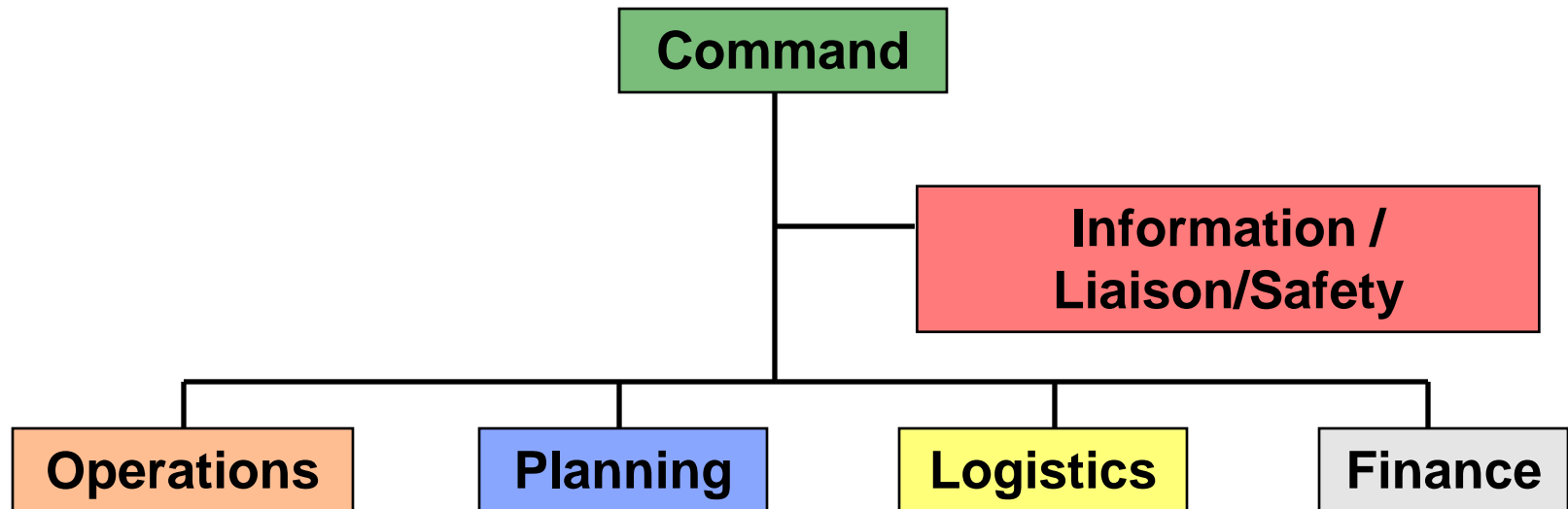
# What is the Incident Command System?

## The Incident Command System:

- Is a model; for command, control, and cooperation of emergency response
- Adaptable and well tested
- Can be used for wide range of emergencies small to large incidents.
- Provides a way of cooperating the efforts of multiple agencies and resources i.e. ministries, communities, organizations, institutions, the federal government and industry.

# Incident Command (Management) System

## Five Primary functions (not people)



# COMMAND - Who's in charge?

## COMMAND

- Initially taken by the first trained responder to arrive at the scene
- Responsible for managing all tactical resources & operations
- Command may transfer, based on who has primary authority for overall control the incident

## UNIFIED COMMAND

- Allows all agencies with jurisdiction for an incident to establish a common set of objectives and strategies
- It is a team effort
- Unified command does not involve losing agency authority, responsibility, or accountability

## SINGLE COMMAND

- The Incident Commander is responsible for all event activities

# SAFETY, LIAISON, INFORMATION

## SAFETY

- Monitors safety conditions and
- develops measures for ensuring the safety of all assigned personnel.
- Corrects unsafe situations via chain of command.
- May stop activity if personnel are in imminent danger

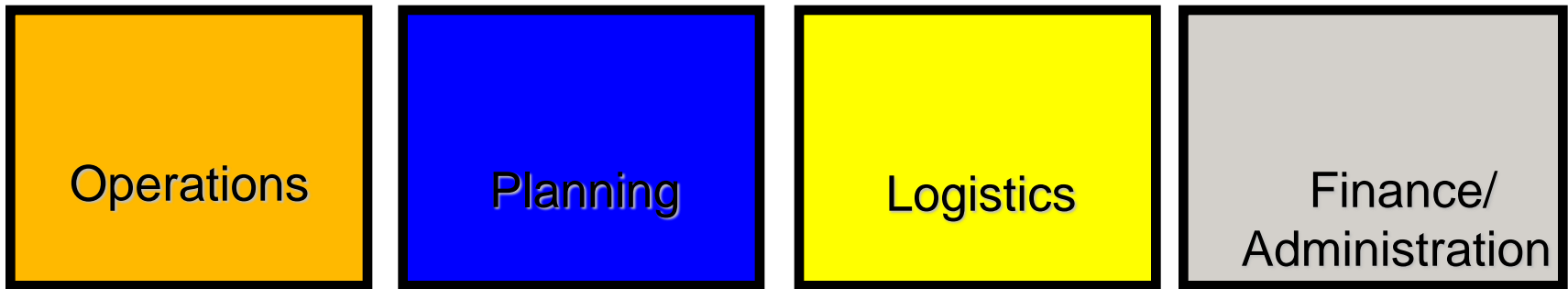
## INFORMATION

- Serves as the point of contact for the media or other organizations seeking information directly from the incident or event
- There should be only one Information Officer. Others will serve as assistants

## LIAISON

On larger incidents or representatives from co-operating or assisting agencies may be assigned to the incident to coordinate their agency's involvement with full authority to make decisions on all matters affecting that agency's participation in the incident. The Liaison Officer serves as their primary contact

# ICS General Staff Functions



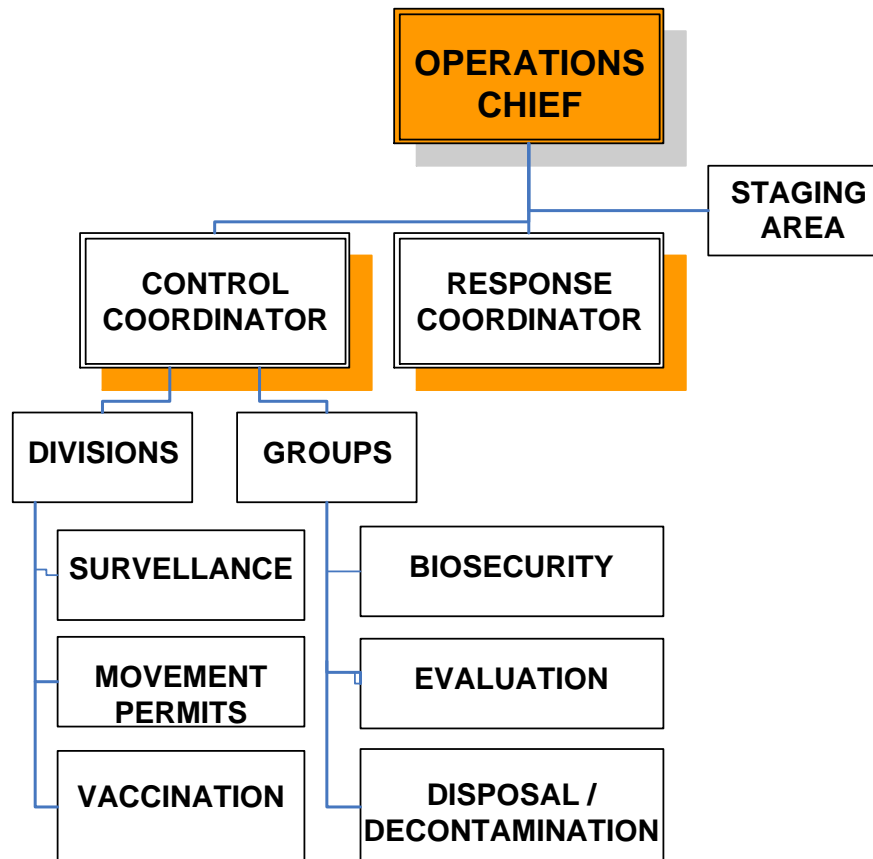
Unity of Command means:

- Reports to only one supervisor
- Receives work assignments only from their supervisor

# OPERATIONS – Identifies and carries out response actions

- Directs and coordinates all tactical operations
- Determines resources required by the section
- Assists command in developing objectives and strategies for the incident
- Requests / releases resources via command

# Operations

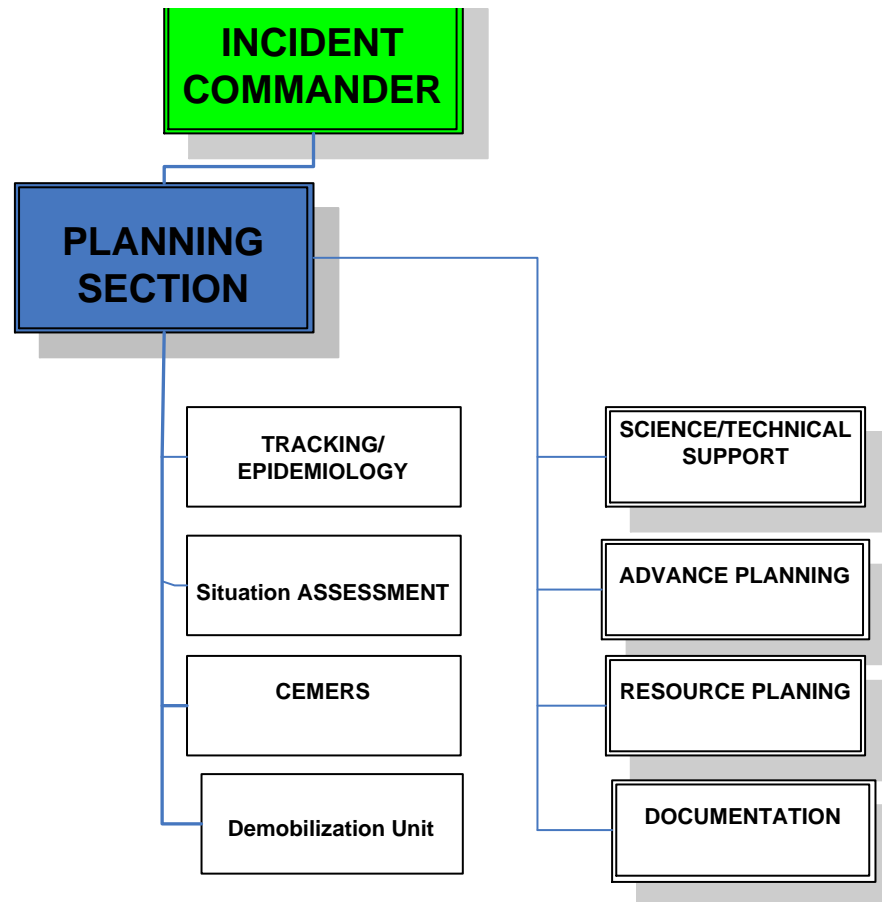




# PLANNING – What needs to be done and how it will be done

- Collects, evaluates, and displays incident, information
- Conducts long-range planning & develops demobilization plans
- Maintain status of all resources assigned to the incident
- Develops and Maintains an Incident Action Plan
  - specifies the incident objectives
  - Identifies strategies to accomplish objectives
  - covers a specific operational period
  - states activities and assigns responsibilities to meet the objectives
  - produced in written form

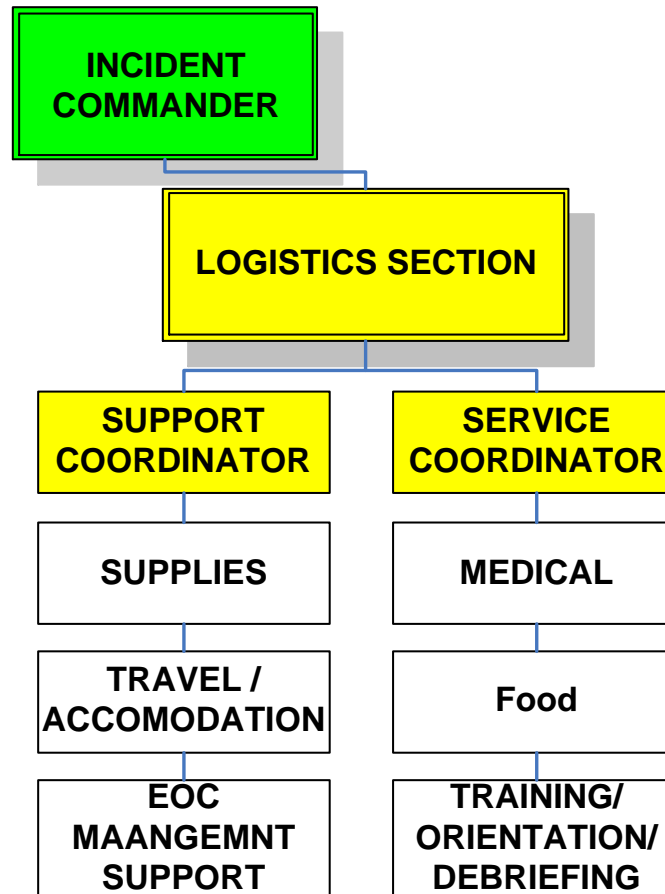
# The Planning Section



# LOGISTICS –What resources are required to support the response e.g. meals, shelter, equipment

- Responsible for all the services and support needs of an incident, including obtaining and maintaining essential personnel, facilities, equipment, and supplies

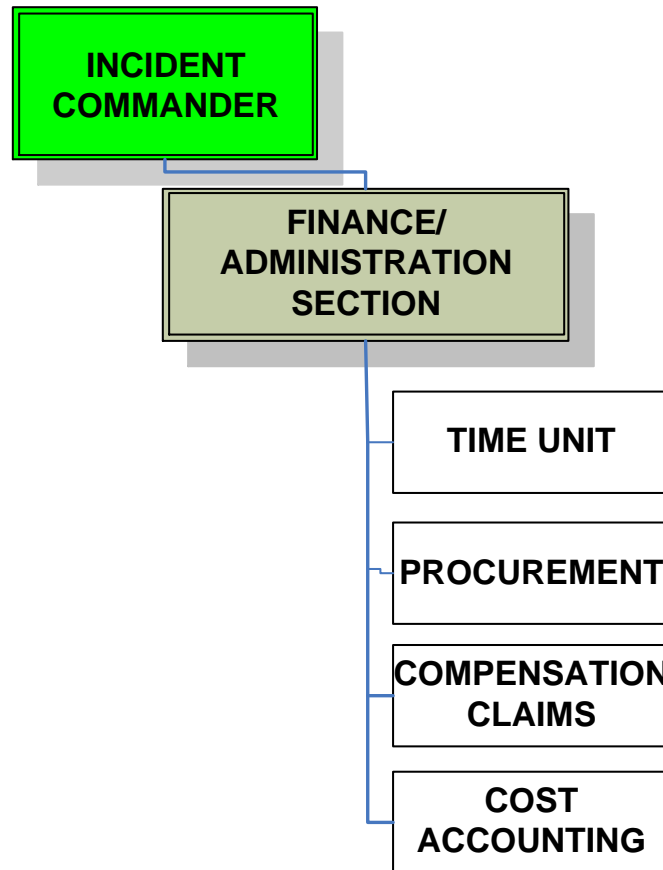
# The Logistics Section



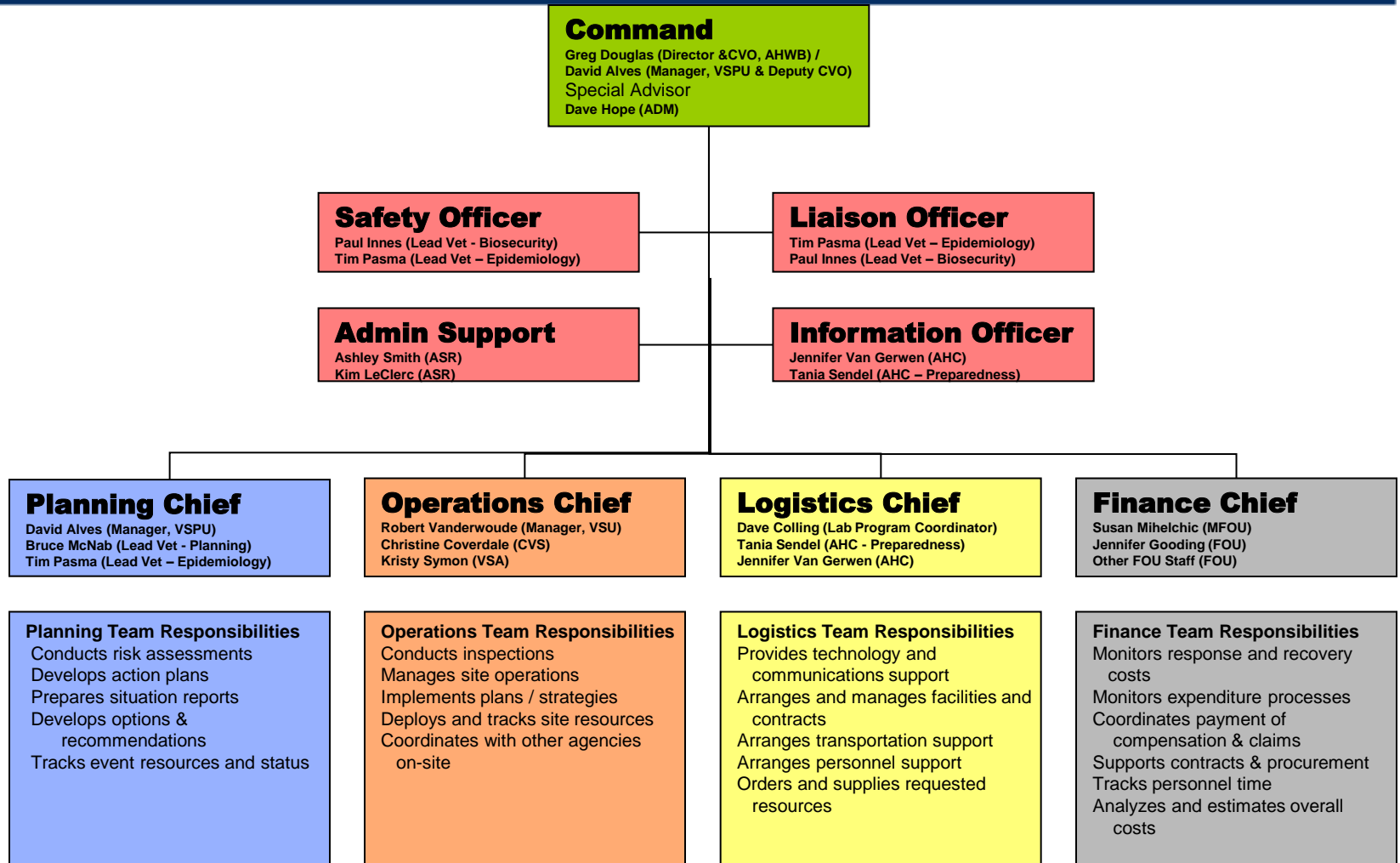
# FINANCE – What expenses need to be tracked & monitored?

- This section is set up for any incident that may require on-site financial management
- Larger incidents increasingly require Finance/Administration Sections to monitor costs and track claims for insurance or government funds

# The Finance/Administration Section

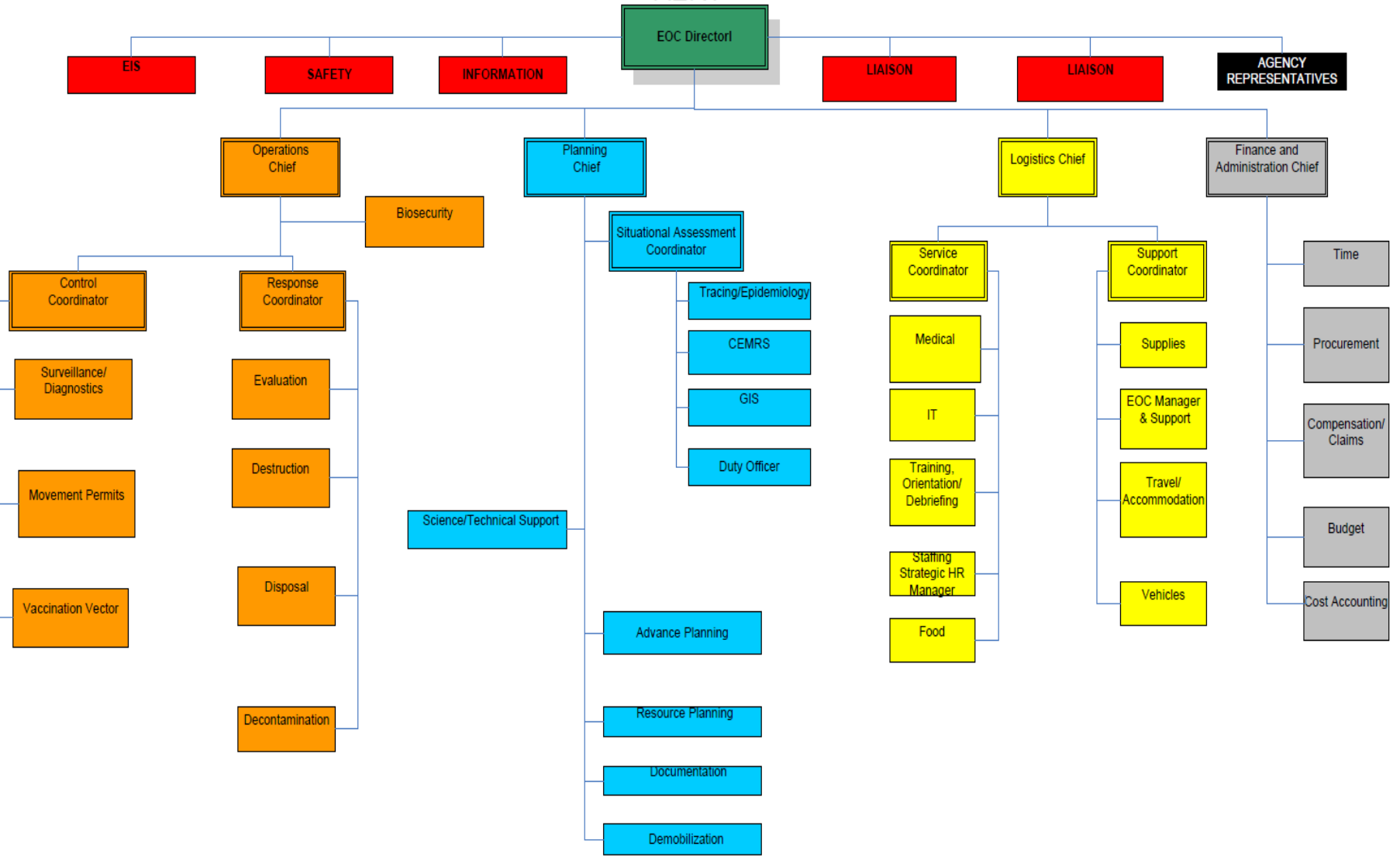


# OMAF & MRA Example



# CFIA - Area Emergency Response Team – Animal Health

## AERT

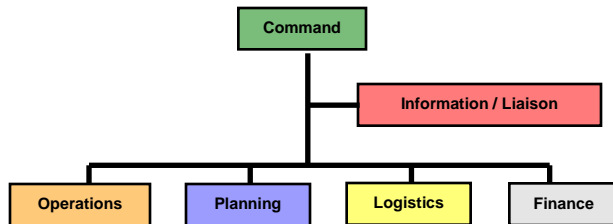


created  
Dec. 18, 2012  
ST/jm

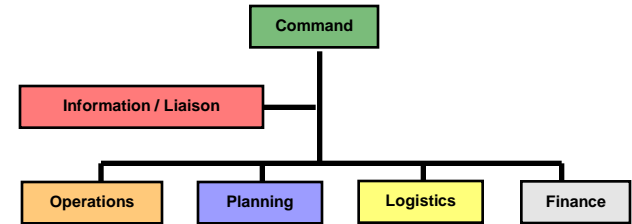


# How Will We Work Together Across Organizations

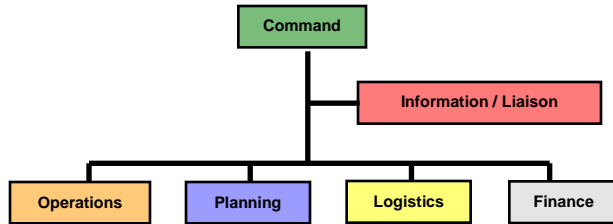
## CFIA



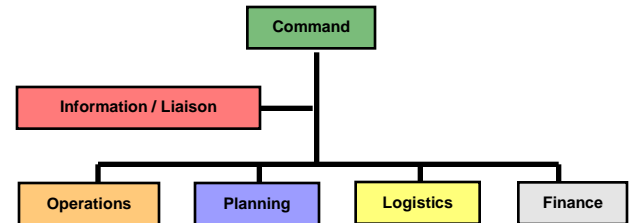
## OMAF & MRA



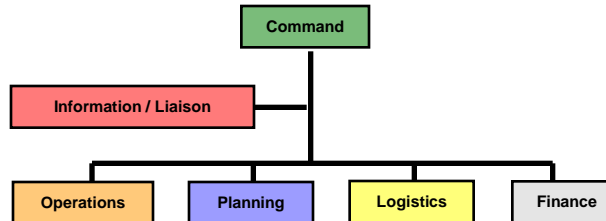
## EMO



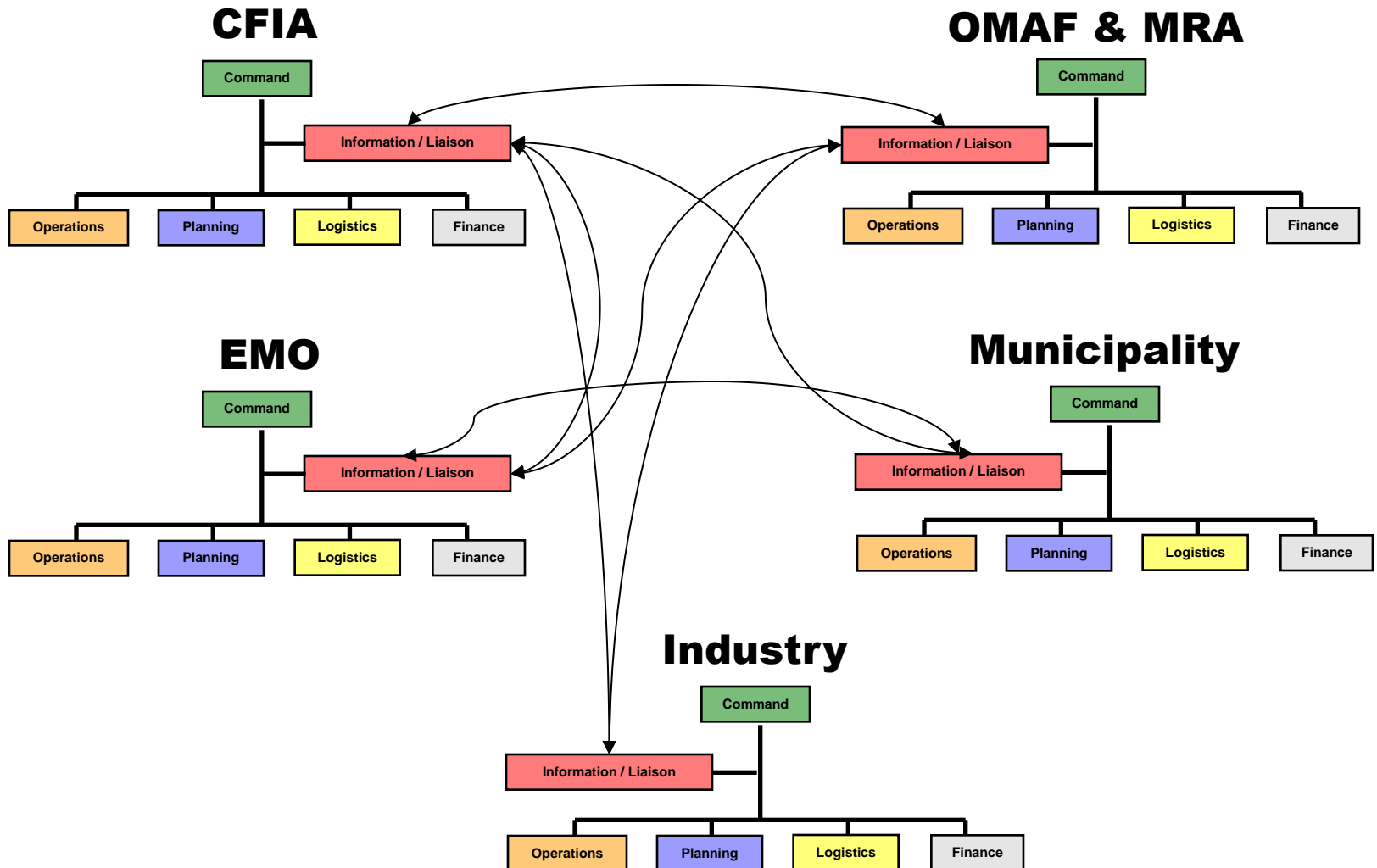
## Municipality



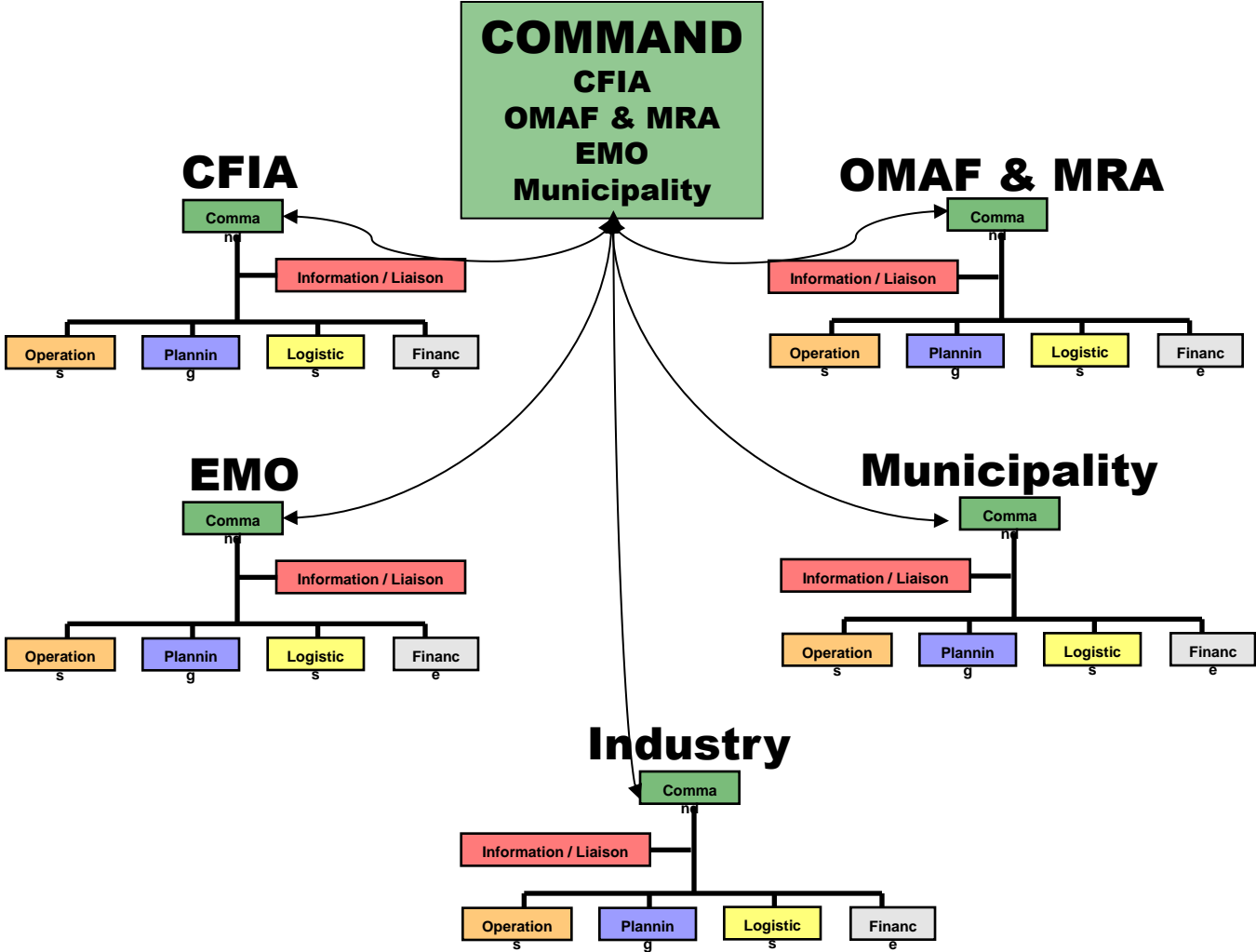
## Industry



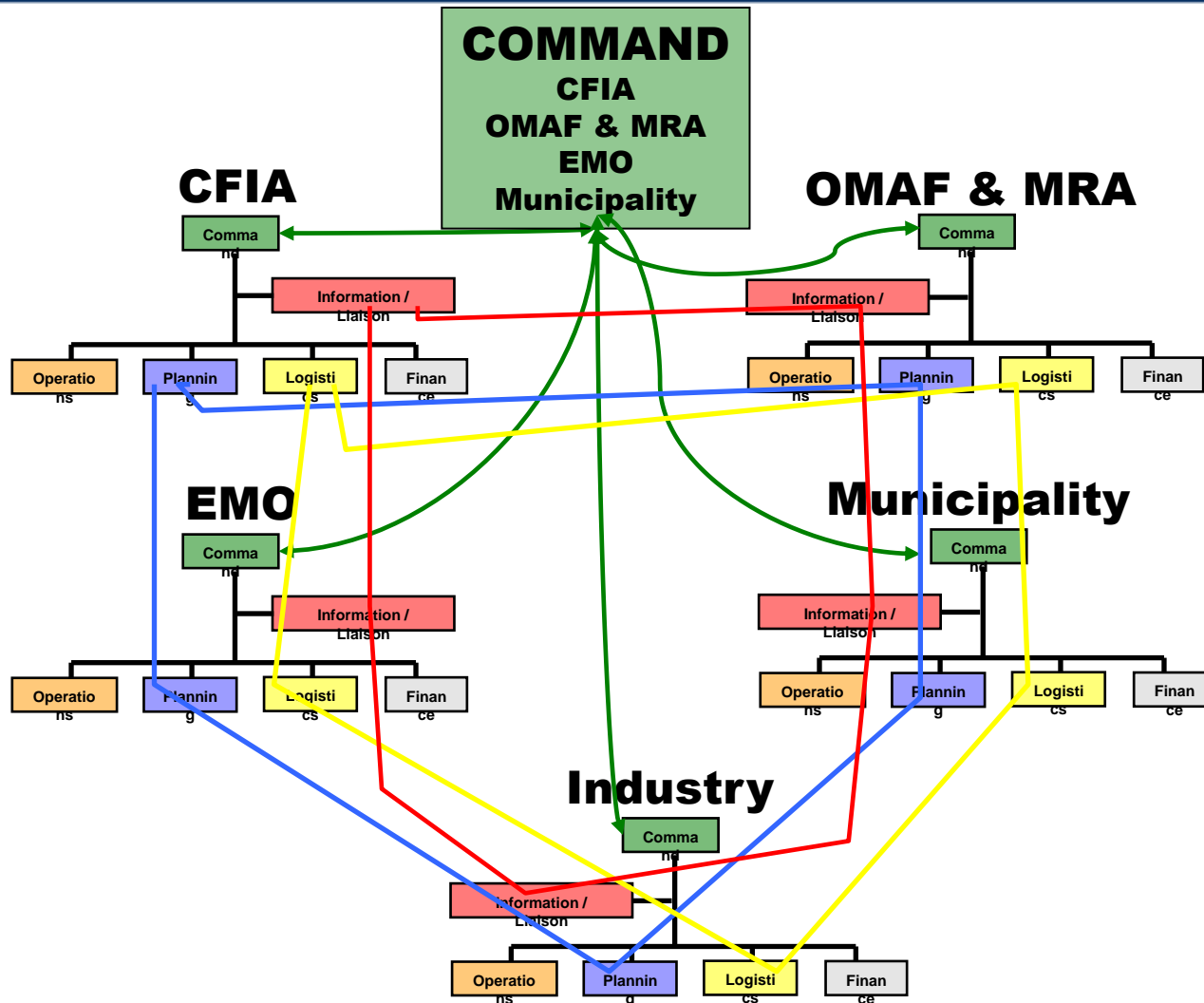
# At Least Linked Through Liaison Connections



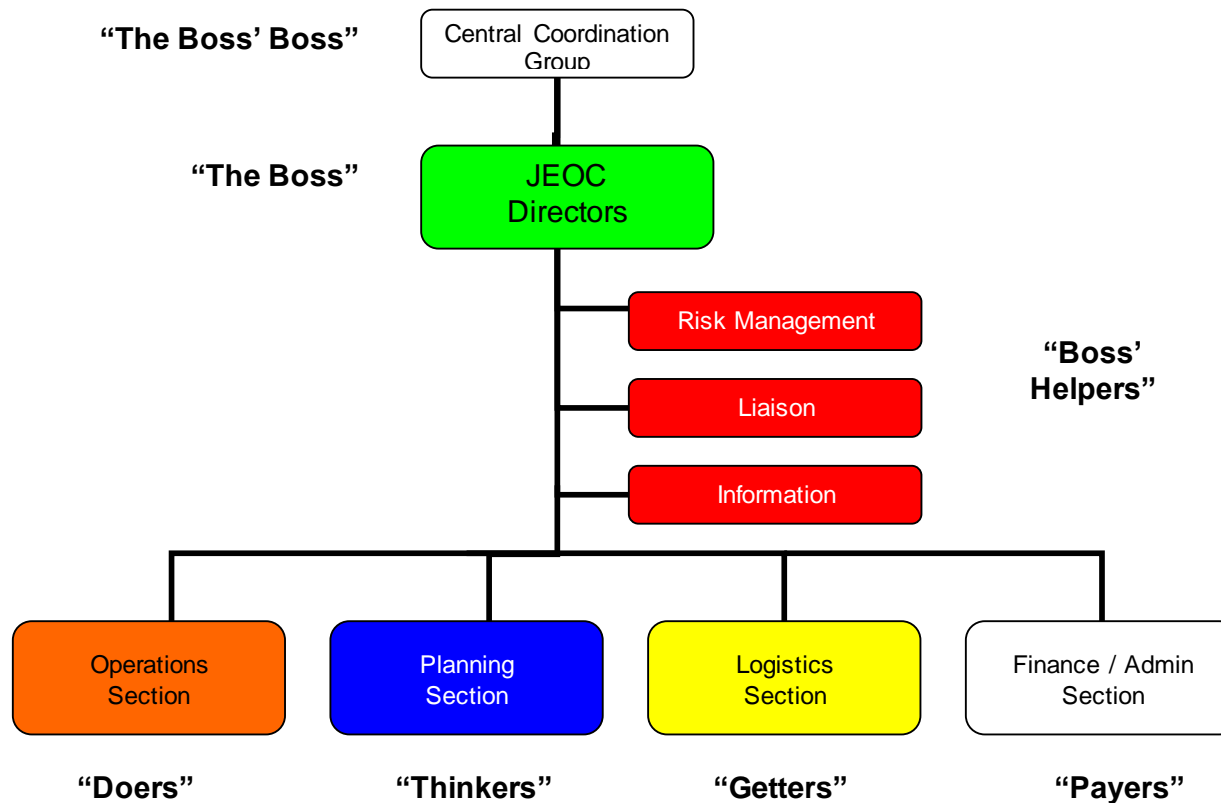
# Single Joint Command Linked At Sub-Command



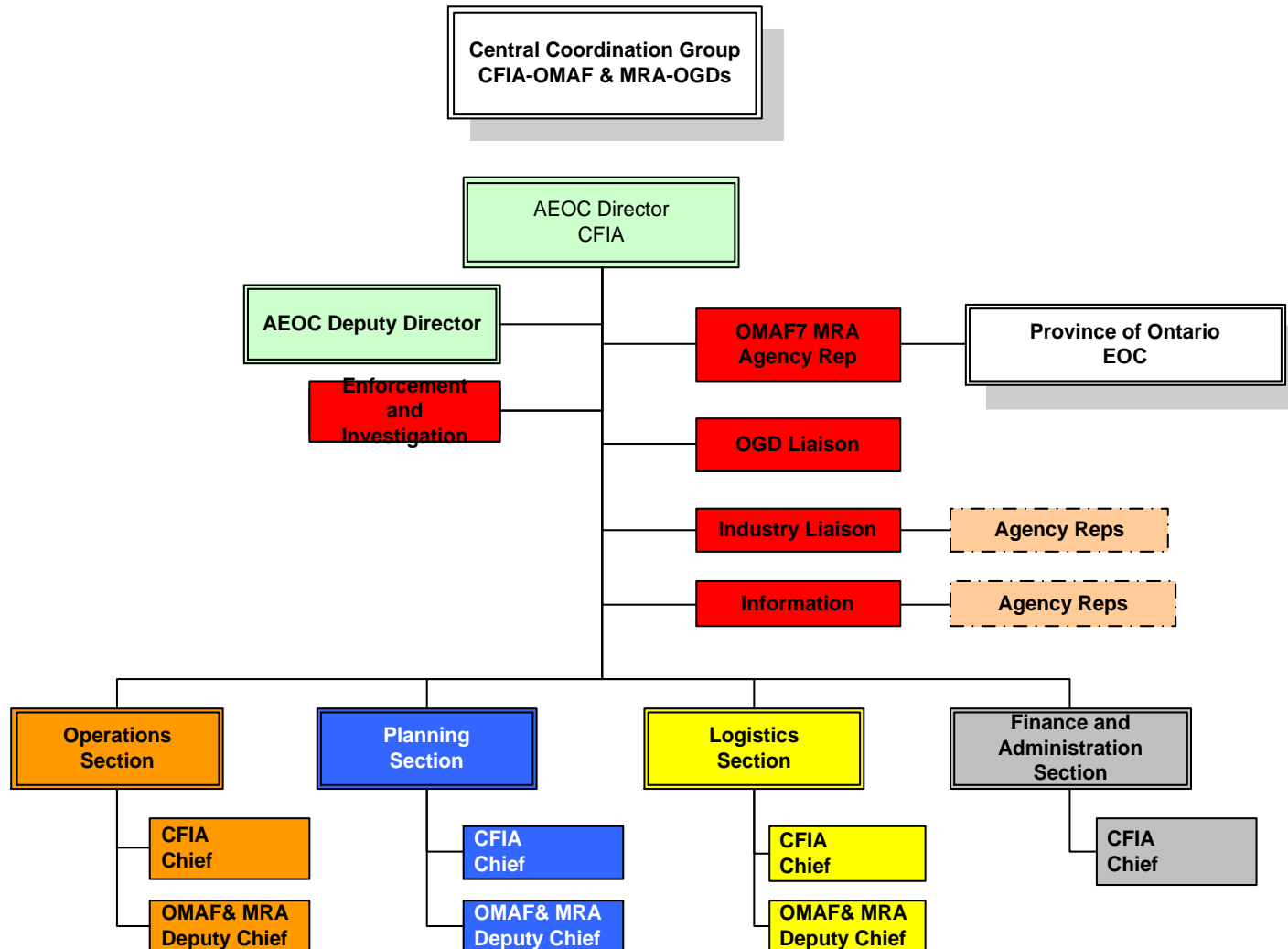
# More Direct Connections At Worker Level



# Joint Emergency Operations Centre Staffing



# Current ICS Org Chart from FADES



# Objectives and Outline

- How we apply ICS across organizations in an animal disease emergency.
- Quick high-level review of ICS (IMS) to get everyone on the same page.
- Participants are seated at 6 tables representing Command, Planning, Operations, Logistics and Finance & Information / Communication functions.
- Players will respond to two scenario modules with questions for each following the scenario information. Questions will be provided in a handout to each table to answer. Tables will report back on their answers to the questions before the entire group.
- Repeat as work through a simple FAD scenario